



# TIRE REPAIR KIT

## INSTRUCTION MANUAL

BORNE OFF-ROAD WORK GEAR

### PARTS INCLUDED

- 1PC** Zinc-Alloy T-Handle Insert
- 1PC** Lube
- 1PC** Zinc-Alloy T-Handle Abrasive Reamer with 1 Extra Reamer
- 1PC** Knife
- 2 PC** Allen Key
- 50PC** 4" Repair Cord
- 1PC** Four Way Valve Tool
- 4PC** Replacement Valve Cores
- 4PC** Black Plastic Valve Stem Caps
- 4PC** Steel Valve Stem Caps

### RESOURCES & CONTACT



**CALL 1-877-GOMISHI**

CUSTOMER SERVICE HOURS: MON-FRI 8:30AM-5:00PM EST



**MISHIMOTO**



**GOMISHIMOTO**



**MISHIMOTO**



**WEBSITE**

[WWW.MISHIMOTO.COM](http://WWW.MISHIMOTO.COM)



**ENGINEERING BLOG**

[WWW.MISHIMOTO.COM/ENGINEERING](http://WWW.MISHIMOTO.COM/ENGINEERING)

### INSTRUCTIONS

**01.** Locate the punctured area and remove any obstructions or debris. The tire may lose pressure quickly when an obstruction is removed. Take all necessary safety precautions when dealing with tires under high pressure.



**02.** Apply lubricant to the abrasive t-handled reamer tool. This reamer is designed to separate the steel belts and also clean out the hole so the plug can make a uniform seal.



**03.** Push the abrasive reamer tool into the hole slowly, once you feel that you have separated the steel belts within the tire rotate the tool back and forth slowly to make a more uniform sealable hole.



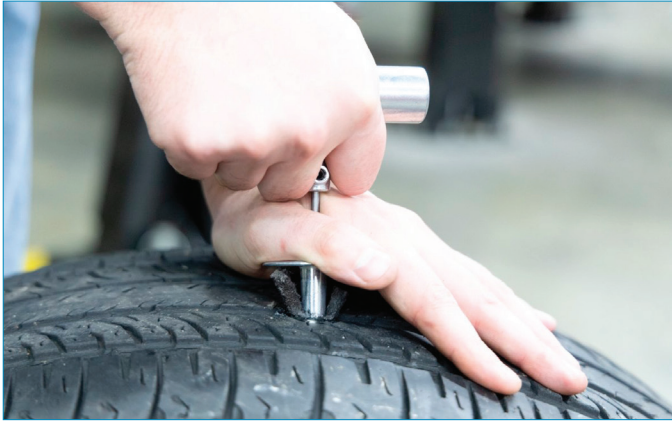
**04.** Thread a repair cord into the end of the insertion tool, centering the repair cord in the eye of the tool.



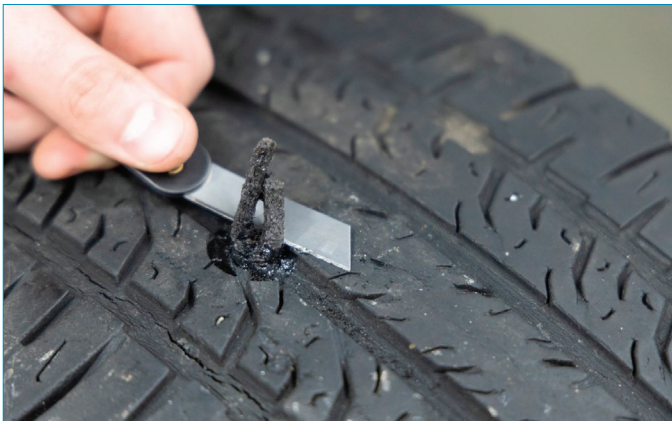
**05.** When you are ready remove the reamer tool from the hole and push the insertion tool and cord into the hole. Do not push so far that the ends of the repair cord go into the tire.



**06.** Push the sliding collar on the insertion tool down firmly against the tread of the tire. While keeping the sliding collar pressed against the tread pull the insertion tool straight out, do not twist or rotate the tool as it may unseat the repair cord.



**07.** Once the insertion tool is full removed, use the knife included in the kit to cut any repair cord that is sticking out above the tread.



**08.** Re-inflate the tire if possible and check if the puncture is sealed. Some punctures may be too large to fully seal with a repair cord.

**09.** Check the repair and take to a tire professional as soon as possible. Repair cord plugs are intended for temporary recovery use.





### WARRANTY INFORMATION



- All claims must be accompanied with a picture of the Mishimoto product showing the issue for which the claim is being submitted.
- Mishimoto asks that the customer inspect their purchased item for any damage immediately upon arrival.
- Any product deemed dead on arrival (DOA) must be claimed within 14 business days of delivery. Claims outside of this time frame will not be covered under the Mishimoto Lifetime Warranty.
- This warranty does not include payment and/or reimbursement of the cost of labor in connection with the removal of any product returned pursuant to the warranty policy or in connection with the installation of any replacement items provided under the warranty policy.
- Mishimoto has the right to refuse a claim at any time.
- When Mishimoto accepts a claim, Mishimoto retains full discretion to choose if it will: (i) repair or replace purchaser's original Mishimoto product; (ii) replace purchaser's original Mishimoto product with the most current available model; or (iii) provide the purchaser with a gift card redeemable on [Mishimoto.com](https://www.mishimoto.com) in the amount of the original purchase price of the original Mishimoto product. The provision of a replacement of a Mishimoto product is subject to availability and Mishimoto retains the right to substitute any warranty claim item with a comparable item or credit at any time.
- If Mishimoto determines that it will provide a replacement item in connection with a claim under this warranty policy, and such item is out of stock, Mishimoto will place the customer on backorder and ship the replacement product to the purchaser once it becomes available.
- Mishimoto is not liable for incorrect shipments in connection with a claim if a claim form is completed incorrectly, or if a model number is not included in a claim.

- If you have a vehicle equipped with an automatic transmission, please make sure to specify this within the text box on the claim form. Mishimoto is not responsible for incorrect replacement shipments if transmission type is not indicated.



**WARNING**  
Cancer and  
Reproductive Harm  
[www.P65Warnings.ca.gov](https://www.P65Warnings.ca.gov)

This product can expose you to chemicals which are known to the state of California to cause cancer. For more information visit: [www.p65warnings.ca.gov](https://www.p65warnings.ca.gov)